

DSP320.2 IN-WALL/IN-CEILING LOUDSPEAKER



DSP320.2 With RF300 rough-in box (available separately)

OVERVIEW

Measuring only 300mm square and 100mm deep, the DSP320.2 offers unrivalled power, accuracy and bass performance for a speaker of its size. Whether mounted in a wall or ceiling, its wide-dispersion capabilities make it perfect for delivering high-quality music discreetly in any listening environment. By combining Meridian's world-renowned DSP technologies with powerful built-in amplification, the DSP320.2 produces deep, extended bass making it a true full-range loudspeaker; its low-frequency response is equivalent to a passive loudspeaker of at least four times the size. Timbre and sound-quality match the other models in the Meridian architectural loudspeaker range, so combinations can be used successfully in surround-sound systems or other applications using multiple loudspeakers. In addition, the DSP320.2 features L+R mode which allows it to be used on its own or in multiples within areas without a specific listening position.

PRODUCT HIGHLIGHTS

- Full-range bass response – plays down to 50Hz.
- Ultra-shallow (100mm deep) box design.
- Fully sealed acoustic enclosure – avoids the variable effect on performance of wall or ceiling construction.
- Two-way design - 85mm wide-range driver, 100mm x 150mm racetrack oval bass-driver.
- Each driver powered by a low distortion 80W Class-D amplifier.
- Developed for maximum dispersion and wide listening area plus minimum unwanted diffraction.
- L + R mode to allow a single loudspeaker to play back all the audio present in a stereo recording.
- Configurable for infra-red control.
- Rough-in box (supplied separately) allows for easy installation and precise positioning for use in-wall or in-ceiling.

TECHNOLOGIES

ON-BOARD DSP

On-board DSP provides thermal and dynamic bass protection while retaining very accurate transients, ensuring that when the loudspeaker is played at high levels – even over prolonged periods of time – it always delivers a clean, detailed and accurate sound.

ENHANCED BASS ALIGNMENT (EBA)

Meridian's innovative Enhanced Bass Alignment (EBA) technology uses two different technologies to time-align high, mid and upper bass frequencies with the low bass, resulting in audibly improved bass transients and added life and clarity.

ENHANCEMENT TECHNOLOGIES

Meridian's unique suite of proprietary technologies includes FIFO buffering, DSP upsampling, apodising filters and MHR (Meridian High Resolution) to get the very best performance from all digital sources.

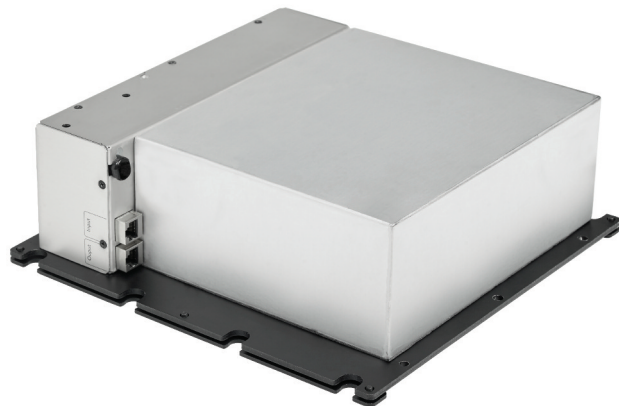


DSP320.2 Front

CONSTRUCTION

The DSP320.2 is made up of a self-contained, all-metal enclosure which bolts into its purpose-built rough-in wall-box. The rough-in box is available separately so it can be fitted into the wall in advance of the installation of the loudspeaker itself. The rough-in box is hard wired to the mains supply and the loudspeaker carries an IEC mains lead which plugs into a socket on the rough-in box.

- The paintable, perforated steel grille supplied with the loudspeaker can be fitted where required. The grille is held in place on the front of the loudspeaker by powerful rubber-coated magnets.
- The optional trim-frame and the front edge of the rough-in box are also both paintable. This allows all exposed parts of the installed loudspeaker to be painted whether or not the trim frame is fitted.



DSP320.2 Rear

SPECIFICATION

AUDIO INPUT	• Meridian SpeakerLink connector (R)45)
AUDIO OUTPUT	• Meridian SpeakerLink connector (R)45)
PERFORMANCE	• Peak SPL: 106dB @ 1m
AMPLIFIERS	• 1 x 80W Class-D amplifier per wide-range driver • 1 x 80W Class-D amplifier per bass driver
BASS DRIVERS	• 1 x 'Racetrack' oval bass driver
WIDE-RANGE DRIVERS	• 1 x 85mm
FRONT PANEL CONTROLS	• On/off rocker switch, Fuse holder, IR window • Rocker switch selects "Right", "L + R", "Left or Centre" • LED indicator shows power status
DIMENSIONS - Including rough-in box, excluding trim-frame	• HEIGHT: 299,5mm [11.8"] WIDTH: 299,5mm [11.8"] DEPTH: 103mm [4.0"]
PRODUCT WEIGHT	• 5 kg [11 lbs]
GRILLE DIMENSIONS	• HEIGHT: 292mm [11.5"] WIDTH: 292mm [11.5"] DEPTH: 4mm [0.16"]
FRAME DIMENSIONS	• HEIGHT: 316mm [12.4"] WIDTH: 316mm [12.4"] DEPTH: 15mm [0.6"]
PACKED PRODUCT DIMENSIONS	• HEIGHT: 430mm [16.9"] WIDTH: 430mm [16.9"] DEPTH: 240mm [9.4"]
VOLUMETRIC WEIGHT	• 7.4 kg [16.3 lbs]
GROSS WEIGHT	• 7.5 kg [16.5 lbs]
POWER CONNECTION	• Flying IEC mains lead connects to mains socket on rough-in wall-box
POWER CONSUMPTION	• STANDBY: 6W [16VA] ON: 7W [17VA] VOLUME 85 (Pink Noise): 18W [30VA]
THERMAL OUTPUT	• STANDBY: 20.5 BTU/HOUR ON: 24 BTU/HOUR VOLUME 85 (Pink Noise): 61.5 BTU/HOUR MAXIMUM: 78 BTU/HOUR
MAXIMUM CURRENT DRAW	• 5A (All operating voltages)

For detailed drawings please contact design@meridian.co.uk